



# FNN

## FASCETTE CABLAGGIO IN PA 6.6 NERO

### BLACK WIRING CLAMPS PA 6.6

CODICE CODE	Ø MAX mm	TENUTA MIN. MIN. HOLD kg	BANDA BAND mm	SCATOLA BOX n°	STOCK
FNN80/2	17	8	2.5	100	✓
FNN100/2	22	8.1	2.5	100	✓
FNN140/2	34	8.1	2.5	100	✓
FNN160/2	40	8.1	2.5	100	✓
FNN200/2	53	8.1	2.5	100	✓
FNN140/3	33	18.2	3.6	100	✓
FNN200/3	51	18.2	3.6	100	✓
FNN250/3	67	18.2	3.6	100	✓
FNN290/3	80	18.2	3.6	100	✓
FNN360/3	102	18.2	3.6	100	✓
FNN160/4	42	22.2	4.8	100	✓
FNN200/4	50	22.2	4.8	100	✓
FNN250/4	66	22.2	4.8	100	✓
FNN290/4	78	22.2	4.8	100	✓
FNN360/4	100	22.2	4.8	100	✓
FNN430/4	123	25.8	4.8	100	✓
FNN530/4	155	25.8	4.8	100	✓
FNN200/7	49	54.4	7.6	100	✓
FNN250/7	64	54.4	7.6	100	✓
FNN290/7	77	54.4	7.6	100	✓
FNN360/7	98	54.4	7.6	100	✓
FNN450/7	127	54.4	7.6	100	✓
FNN540/7	152	54.4	7.6	100	✓
FNN750/7	218	54.4	7.6	100	✓
FNN530/9	150	79.8	9	100	✓
FNN780/9	228	79.8	9	100	✓
FNN1500/9	460	79.8	9	100	✓
FNN1000/12	295	114	12.6	100	✓



#### DESCRIZIONE DESCRIPTION

Fascette di cablaggio prodotte in PA 6.6  
 Colore nero  
 Temperatura di utilizzo: -40°+85°C  
 I bordi laterali sono alti come la cremagliera per evitare di incidere i cavi.  
 Cable ties manufactured in PA6.6, black color.  
 Usage temperature: -40 °+ 85 °C.  
 The side edges are as high as the rack to avoid cutting the cables.



Poliamide PA 6.6  
 Polyamide PA 6.6



#### IMPIEGO APPLICATION

Suggerite per applicazioni in ambienti interni.  
 Recommended for indoor applications.



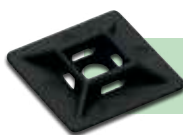
**ORIGINE  
ORIGIN**  
EXTRA UE



**DOGANA  
CUSTOM**  
73269090



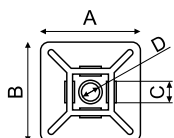
**NORMATIVA  
NORM**  
UL 62275  
n°E468944



#### BASETTE BIDIREZIONALI IN PA 6.6 NERO CON ADESIVO PA 6.6 BIDIRECTIONAL BLACK BASES WITH ADHESIVE

Accessori adesivi per fascette prodotti in PA6.6, suggeriti per fissaggi su pannelli senza la necessità di forare. Si caratterizzano per la possibilità di un fissaggio bidirezionale con fascette di cablaggio. Applicare su superfici pulite e sgrassate.

Adhesive accessories for cable ties produced in PA6.6, suggested for fixing on panels without the need to drill. They are characterized by the possibility of a bidirectional fixing with cable ties. Apply on clean and degreased surfaces.



CODICE CODE	A x B mm	C mm	D mm	SCATOLA BOX n°	STOCK
BNN12/12	12x12	3.2	—	100	—
BNN19/19	19x19	3.6	3.2	100	—
BNN27/27	27x27	5.5	5.5	100	—